

COPYRIGHT © Hangzhou EZVIZ Software Co., Ltd. ALL RIGHTS RESERVED.

Any and all information, including, among others, wordings, pictures, graphs are the properties of Hangzhou EZVIZ Software Co., Ltd. (hereinafter referred to as “EZVIZ”). This user manual (hereinafter referred to as “the Manual”) cannot be reproduced, changed, translated, or distributed, partially or wholly, by any means, without the prior written permission of EZVIZ. Unless otherwise stipulated, EZVIZ does not make any warranties, guarantees or representations, express or implied, regarding to the Manual.


### **About this Manual**

The Manual includes instructions for using and managing the product. Pictures, charts, images and all other information hereinafter are for description and explanation only. The information contained in the Manual is subject to change, without notice, due to firmware updates or other reasons. Please find the latest version in the EZVIZ™ website (<http://www.ezviz.com>).

### **Revision Record**

New release – January, 2025

### **Trademarks Acknowledgement**

EZVIZ™, ™, and other EZVIZ's trademarks and logos are the properties of EZVIZ in various jurisdictions. Other trademarks and logos mentioned below are the properties of their respective owners.

### **Legal Disclaimer**

TO THE MAXIMUM EXTENT PERMITTED BY APPLICABLE LAW, THE PRODUCT DESCRIBED, WITH ITS HARDWARE, SOFTWARE AND FIRMWARE, IS PROVIDED “AS IS”, WITH ALL FAULTS AND ERRORS, AND EZVIZ MAKES NO WARRANTIES, EXPRESS OR IMPLIED, INCLUDING WITHOUT LIMITATION, MERCHANTABILITY, SATISFACTORY QUALITY, FITNESS FOR A PARTICULAR PURPOSE, AND NON-INFRINGEMENT OF THIRD PARTY. IN NO EVENT WILL EZVIZ, ITS DIRECTORS, OFFICERS, EMPLOYEES, OR AGENTS BE LIABLE TO YOU FOR ANY SPECIAL, CONSEQUENTIAL, INCIDENTAL, OR INDIRECT DAMAGES, INCLUDING, AMONG OTHERS, DAMAGES FOR LOSS OF BUSINESS PROFITS, BUSINESS INTERRUPTION, OR LOSS OF DATA OR DOCUMENTATION, IN CONNECTION WITH THE USE OF THIS PRODUCT, EVEN IF EZVIZ HAS BEEN ADVISED OF THE POSSIBILITY OF SUCH DAMAGES. TO THE MAXIMUM EXTENT PERMITTED BY APPLICABLE LAW, IN NO EVENT SHALL EZVIZ'S TOTAL LIABILITY FOR ALL DAMAGES EXCEED THE ORIGINAL PURCHASE PRICE OF THE PRODUCT.

EZVIZ DOES NOT UNDERTAKE ANY LIABILITY FOR PERSONAL INJURY OR PROPERTY DAMAGE AS THE RESULT OF PRODUCT INTERRUPTION OR SERVICE TERMINATION CAUSED BY: A) IMPROPER INSTALLATION OR USAGE OTHER THAN AS REQUESTED; B) THE PROTECTION OF NATIONAL OR PUBLIC INTERESTS; C) FORCE MAJEURE; D) YOURSELF OR THE THIRD PARTY, INCLUDING WITHOUT LIMITATION, USING ANY THIRD PARTY'S PRODUCTS, SOFTWARE, APPLICATIONS, AND AMONG OTHERS.

REGARDING TO THE PRODUCT WITH INTERNET ACCESS, THE USE OF PRODUCT SHALL BE WHOLLY AT YOUR OWN RISKS. EZVIZ SHALL NOT TAKE ANY RESPONSIBILITIES FOR ABNORMAL OPERATION, PRIVACY LEAKAGE OR OTHER DAMAGES RESULTING FROM CYBER ATTACK, HACKER ATTACK, VIRUS INSPECTION, OR OTHER INTERNET SECURITY RISKS; HOWEVER, EZVIZ WILL PROVIDE TIMELY TECHNICAL SUPPORT IF REQUIRED. SURVEILLANCE LAWS AND DATA PROTECTION LAWS VARY BY JURISDICTION. PLEASE CHECK ALL RELEVANT LAWS IN YOUR JURISDICTION BEFORE USING THIS PRODUCT IN ORDER TO ENSURE THAT YOUR USE CONFORMS TO THE APPLICABLE LAW. EZVIZ SHALL NOT BE LIABLE IN THE EVENT THAT THIS PRODUCT IS USED WITH ILLEGITIMATE PURPOSES.

IN THE EVENT OF ANY CONFLICTS BETWEEN THE ABOVE AND THE APPLICABLE LAW, THE LATTER PREVAILS.

# Table of Contents

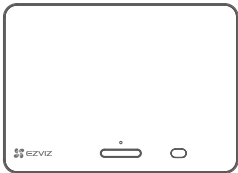
<b>Attention .....</b>	<b>1</b>
<b>Package Contents .....</b>	<b>1</b>
<b>Overview .....</b>	<b>2</b>
1. Panel.....	2
2. Camera.....	2
3. Mounting Base .....	3
<b>Setup.....</b>	<b>3</b>
<b>Get the EZVIZ App.....</b>	<b>3</b>
1. Install a micro SD Card (Optional).....	4
2. Install the peephole .....	4
<b>Power on .....</b>	<b>7</b>
<b>Add to EZVIZ App.....</b>	<b>8</b>
<b>Maintenance.....</b>	<b>8</b>
1. Charge the Panel .....	8
2. Restore to Factory Settings .....	9
<b>View Your Device .....</b>	<b>10</b>
<b>EZVIZ Connect.....</b>	<b>12</b>
1. Use Amazon Alexa.....	12
2. Use Google Assistant .....	13
<b>Initiatives on the Use of Video Products.....</b>	<b>14</b>
<b>Appendix .....</b>	<b>15</b>
1. Rechargeable Lithium ion Battery .....	15
2. INFORMATION FOR PRIVATE HOUSEHOLDS .....	15

# Attention

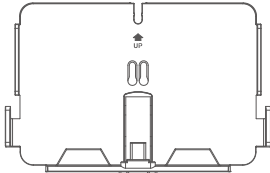


- Do not expose the camera to the harsh environment like high temperature, humid, salt mist or rain, otherwise, the device may be damaged.
- Do not press the sensor or lens of the camera, otherwise, the device may be damaged.
- Do not pull the wire of the camera hard, and protect yourself from being cut by the wire. The warranty does not cover damage to the wire caused by improper use.
- Use the exclusive power adapter to charge the panel, otherwise, the system may be damaged.

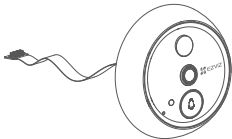
## Package Contents



Panel (x1)



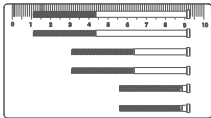
Mounting Base (x1)



Camera (x1)



Buckle (x1)



Screws (x6)



Base Cover (x1)



Power Cable (x1)



Regulatory Information (x2)

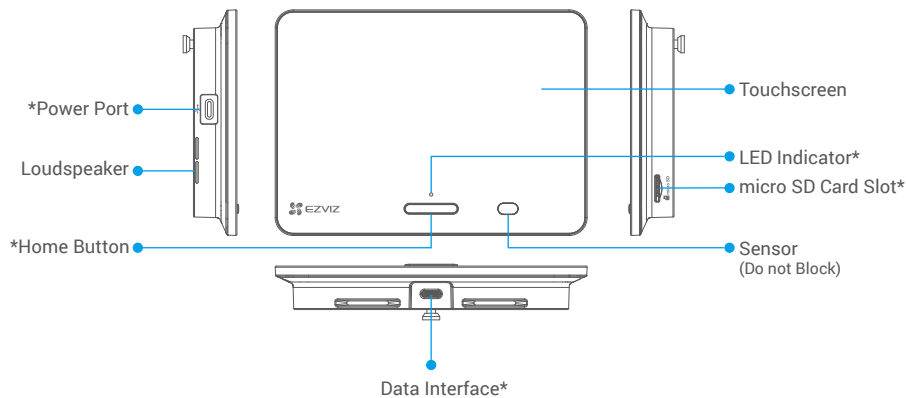


Quick Start Guide (x1)

**i** The appearance of the product and accessories may vary depending on the model you purchase.

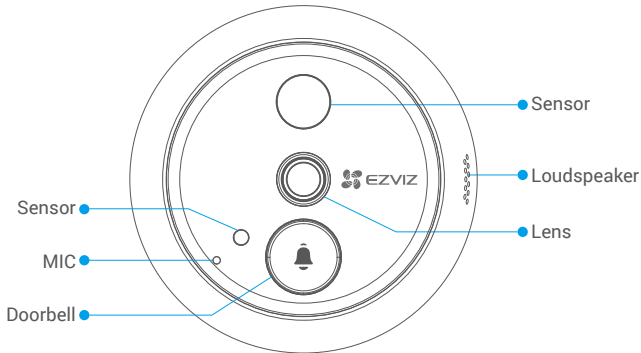
# Overview

## 1. Panel



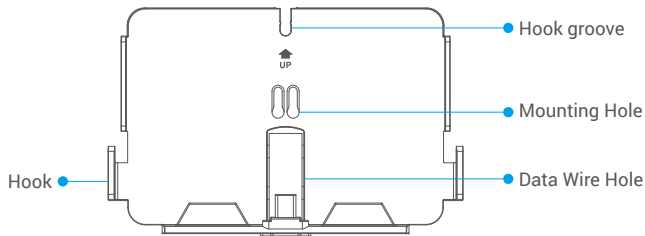
Name	Description
Power Port	Connect it to a power outlet with a power adapter(DC5V 2A, purchase separately) to charge the panel.
Home Button	<ul style="list-style-type: none"><li>• Power on/off: Press and hold for 3 to 5 seconds.</li><li>• Screen on/off: Press once.</li></ul>
LED Indicator	When the Home button is pressed, or when someone is detected outside the door by the camera,the indicator light turns on.
micro SD Card Slot	<ul style="list-style-type: none"><li>• Insert a micro SD card (sold separately) into this slot. Initialize the card in the EZVIZ App before using it.</li><li>• Recommended compatibility: Class 10, maximum space 512GB.</li></ul>
Data interface	For connecting to the camera.

## 2. Camera



**i** Do not block the sensors.

### 3. Mounting Base



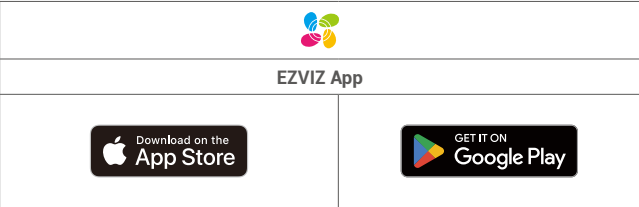
### Setup

Follow the steps to set your peephole:

1. Get the EZVIZ app, and log in to your EZVIZ app account.
2. Install your peephole and power on.
3. Connect your peephole to the Internet.
4. Add your peephole to your EZVIZ account.

### Get the EZVIZ App

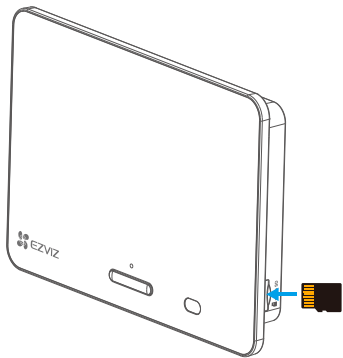
1. Download and install the EZVIZ app by searching “EZVIZ” in the App Store or Google Play™.
2. Launch the app and register an EZVIZ user account.



**i** If you have already used the app, please make sure that it is the latest version. To find out if an update is available, go to the app store and search for EZVIZ.

## 1. Install a micro SD Card (Optional)

1. Insert a micro SD card (sold separately) into the SD card slot as shown in the figure below.






**i** After installing the micro SD card, you should initialize the card in the EZVIZ App before using it.

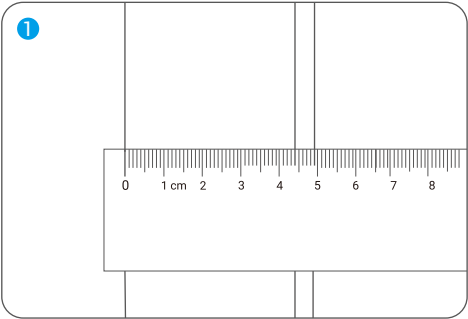
- 2. In the EZVIZ App, tap the Record List in the Device Settings interface to check the SD card status.
- 3. If the memory card status displays as **Uninitialized**, tap to initialize it.
- 4. The status changes to Normal and it can store videos.

## 2. Install the peephole

If you already have a peephole, install the device in the same place. If not, please drill a hole of diameter about 14mm (no more than 50mm) and about 145cm distance from the ground to have a good viewing effect.

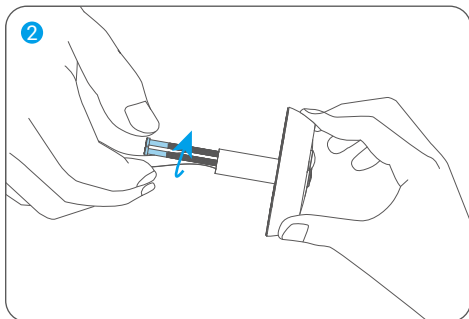
1. Measure the door's thickness and select the appropriate screws.

Thickness	Screw
35mm to 60mm	
60mm to 85mm	
85mm to 105mm	

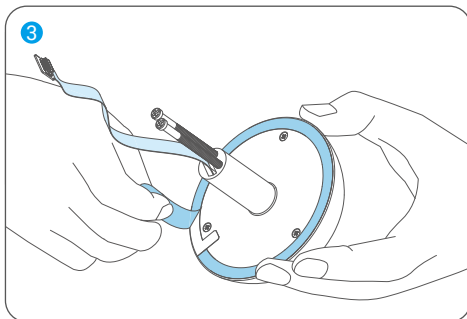


2. Turn the screws into the back of the camera without tightening.

**i** Just fix it, no tightening required.

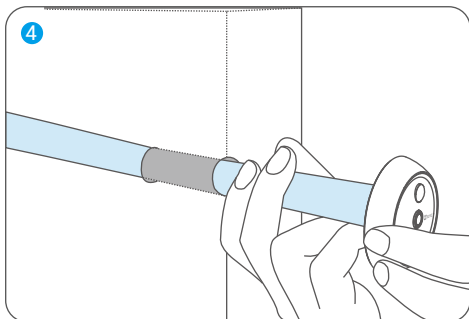


3. Tear off the release paper.

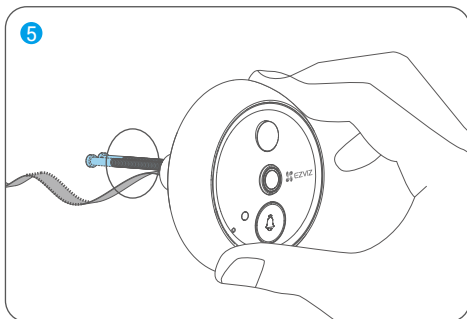


4. Pass the screws and wire through the door hole.

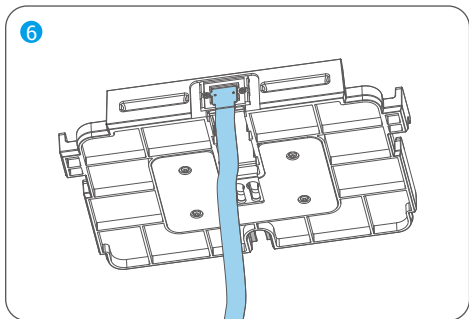
**i** Wrap them in a paper tube for easier insertion.



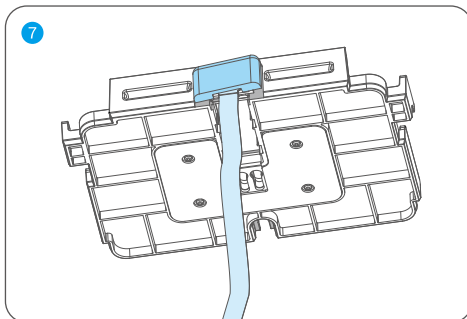
5. Adjust camera's position and push it close to the door gently.



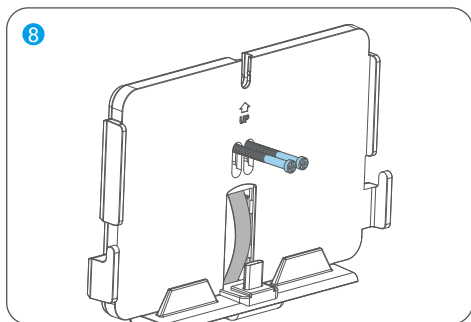
6. Take out the base, and plug the connector of the camera into the slot on the bottom of the base.



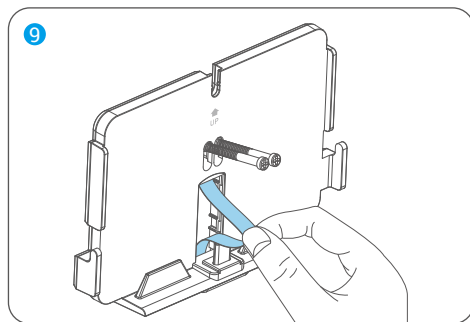
7. Attach the base cover (included in the package) to the cable connection



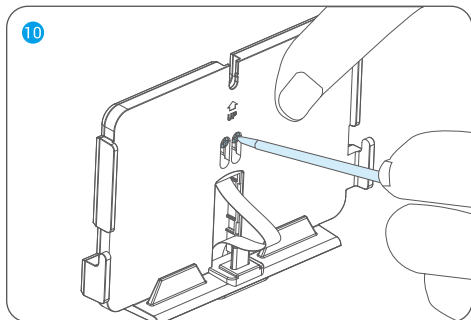
8. Pass screws through the mounting holes.



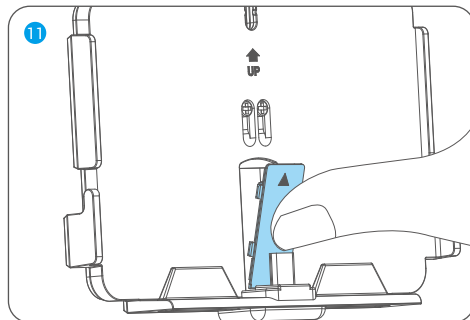
9. Gently pull the camera connector cable through the mounting base opening.



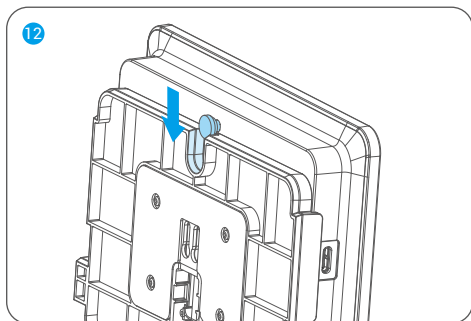
10. Adjust the mounting base's position and tighten the screws.



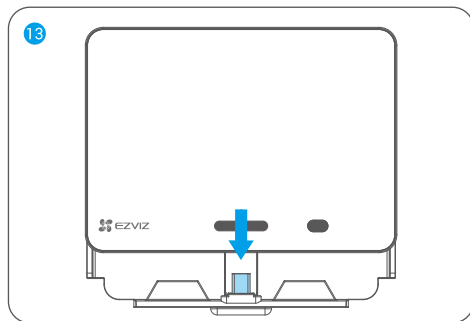
11. Put the wires in the data wire hole and insert the buckle.



12. Align the panel back with the mounting base and match the hooks on the panel to the grooves on the mounting base.



13. Slide the panel downward until securely seated on the mounting base.

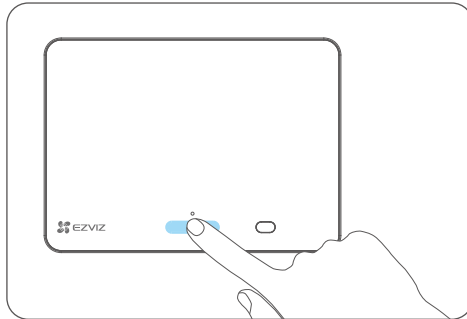


14. After installation, remove all protective films from the camera lens and the panel.

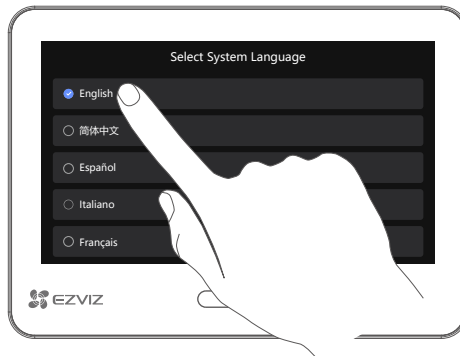


## Power on

1. Press and hold the Home button for 3 to 5 seconds to power on the panel.

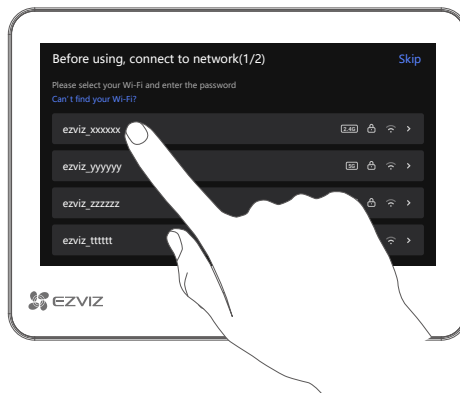


2. Tap the touchscreen to select your language.



3. (Recommended) Follow the wizard to connect Wi-Fi.

**i** The panel does not support 5GHz Wi-Fi, please connect it with 2.4GHz Wi-Fi.



## Add to EZVIZ App

1. On your smartphone, log in to your EZVIZ App account, on the Home screen, tap “+” on the upper-right corner to go to the Scan QR Code interface.
2. Scan the QR code on the screen of the panel.



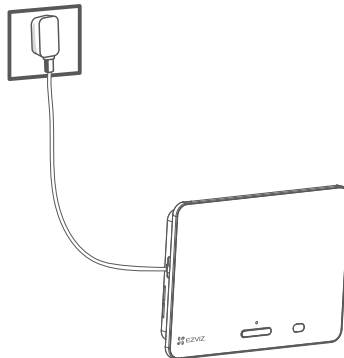
3. Follow the EZVIZ App wizard to add the panel to your EZVIZ account.

**i** If you failed to get the QR code or want to reconfigure Wi-Fi, please tap **Settings** -> **Firmware** on the touchscreen to see QR code.

## Maintenance

### 1. Charge the Panel

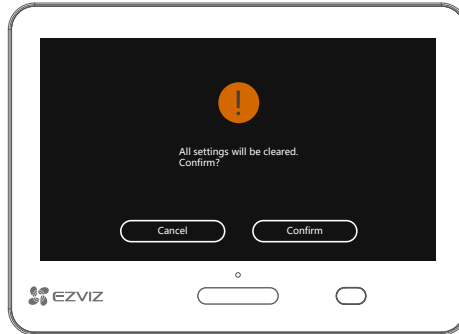
If the panel is out of battery, connect the panel to a power outlet via power adapter (DC5V 2A, sold separately).



- i** • Remove the panel from the mounting base before charging.
- When charging, the panel will be automatically turned on.
- The power outlet shall be installed near the power adapter and shall be easily accessible.
- You can also charge the panel via portable charger and hang it on the hook.
- Do not charge the panel when the environmental temperature exceeds 45°C or below 0°C.

## 2. Restore to Factory Settings

Tap "Settings -> Firmware -> Default and "Confirm" to restore the device to factory settings.



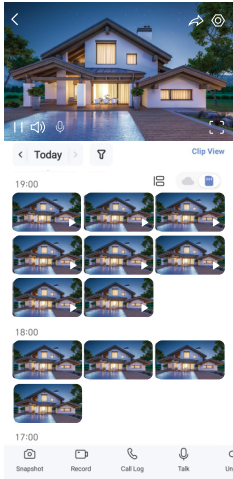
Caution! All settings will be restored to factory settings.

# View Your Device

## 1. Live View

**i** The app interface may be different due to version update, and the interface of the app you installed on your phone shall prevail.

Launch the EZVIZ app, tap **Live View** button, you can view and listen to a live feed, take snapshots, record videos, and select video definition as needed.



**i** Swipe left and right across the screen to see more icons.

Icon	Description
	Share. Share your device.
	Settings. View or change the device settings.
	Full Screen Display. Tap to enjoy a full screen display for your filed of view.
	Snapshot. Take a snapshot.
	Record. Manually start/stop recording.
	Call Log. View call logs.
	Talk. Tap the icon, and then follow the on–screen instructions to talk to or listen to people in front of the camera.
	Definition. Select video resolution as you needed.
	Nearby Device. Tap to check available devices nearby.
	PiP. View the video displayed on top of another app you are using.
	Tip. Tap to see more information about the device.
	Rearrange. Rearrange the sequence of all the functions above.

## 2. Settings

In the settings page, you can set the parameters of the device.

Parameter	Description
Name	View or tap to customize the name of your device here.
Battery	You can see the battery remaining capacity here and choose the working mode of your device.
Intelligent Detection	You can select between different detection types for your device.
Message Notification	You can manage the device message and EZVIZ app notification.
Audio Settings	You can set audio and device voice prompt here.
Image Settings	You can set relevant image parameters for your device.
Screen Settings	You can set the screen brightness, auto wake-up and auto-lock screen time here.
Light Settings	You can set relevant light parameters for your device.
Record List	You can see the micro SD card status, and also you can enable or disable cloud storage service here.
Privacy Settings	You can encrypt your videos with encryption password and customize the privacy area.
Network Settings	You can see the connection status, used data here.
Device Information	You can see the device information here, including the user guide.
EZVIZ Cloud	You can subscribe and manage the cloud storage.
Share Device	You can share the device to your family member or guest.
Delete Device	Tap to delete the camera from EZVIZ app.

## 1. Use Amazon Alexa

These instructions will enable you to control your EZVIZ devices with Amazon Alexa. If you run into any difficulties during the process, please refer to **Troubleshooting**.

### Before you start, make sure that:

1. EZVIZ devices are connected to the EZVIZ app.
2. In the EZVIZ app, turn off the "Video Encryption" and turn on the "Audio" in the Device Settings page.
3. You have an Alexa-enabled device (i.e Echo Spot, Echo-Show, All-new Echo-Show, Fire TV (all generations), Fire TV stick (second generation only), or Fire TV Edition smart TVs).
4. The Amazon Alexa app is already installed on your smart device, and you have created an account.

### To Control EZVIZ devices with Amazon Alexa:

1. Open the Alexa app and select "Skills and Games" from the menu.
2. On the Skills and Games screen, search for "EZVIZ", and you will find "EZVIZ" skills.
3. Select your EZVIZ device's skill, then tap **ENABLE TO USE**.
4. Enter your EZVIZ username and password, and tap **Sign in**.
5. Tap the **Authorize** button to authorize Alexa to access your EZVIZ account, so that Alexa can control your EZVIZ devices.
6. You will see "EZVIZ has been successfully linked", then tap **DISCOVER DEVICES** to allow Alexa to discover all your EZVIZ devices.
7. Go back to Alexa app menu and select "Devices", and under devices you will see all your EZVIZ devices.

### Voice Command

Discover a new smart device via the "Smart Home" menu in the Alexa app or the Alexa Voice Control function. Once the device is found, you can control it with your voice. Speak simple commands to Alexa.

### Troubleshooting

#### What should I do if Alexa fails to discover my device?

Check if there are any Internet connecting problems.

Try to restart the smart device and re-discover the device on Alexa.

#### Why the device's status is "Offline" on Alexa?

Your device might have been disconnected from the network. Restart the smart device and re-discover on Alexa.

Check if your router is connected to the Internet and try again.

 For details about countries where Amazon Alexa is available, see Amazon Alexa's official website.

## 2. Use Google Assistant

With the Google Assistant, you can activate your EZVIZ device and watch live by speaking Google Assistant voice commands.

### The following devices and apps are required:

1. A functional EZVIZ app.
2. In the EZVIZ app, turn off the "Video Encryption" and turn on the "Audio" in the Device Settings page.
3. A TV with functional Chromecast connecting to it.
4. The Google Assistant app on your phone.

### To get started, follow the steps below:

1. Set up the EZVIZ device and make sure it works properly on the app.
2. Download the Google Home app from the App Store or Google Play™ and log into your Google account.
3. On the Myhome screen, tap "+" on the upper-left corner, and select "Set up device" from the menu list to go to the Set up interface.
4. Tap **Works with Google**, and search for "EZVIZ", where you will find "EZVIZ" skills.
5. Enter your EZVIZ username and password, and tap **Sign in**.
6. Tap the **Authorize** button to authorize Google to access your EZVIZ account, so that Google can control your EZVIZ devices.
7. Tap **Return to app**.
8. Follow the above steps to complete the authorization. When synchronization is completed, EZVIZ service will be listed under your list of services. To see a list of compatible devices under your EZVIZ account, tap on the EZVIZ service icon.
9. Now try some commands. Use the name of the camera that you created when you set up the system.

Users can manage devices as a single entity or in a group. Adding devices to a room allows users to control a group of devices at the same time using one command.

See the link for more information:

<https://support.google.com/googlehome/answer/7029485?co=GENIE.Platform%3DAndroid&hl=en>

 For additional information about the device, please refer to [www.ezviz.com/eu](http://www.ezviz.com/eu).

# Initiatives on the Use of Video Products

Dear Valued EZVIZ Users,

Technology affects every aspect of our life. As a forward-looking tech company, we are increasingly aware of the role technology plays in improving efficiency and quality of our life. At the same time, we are also aware of the potential harm of its improper usage. For example, video products can record real, complete and clear images, therefore they hold great values in representing facts. Nevertheless, improper distribution, use and/or processing of video records may infringe on the privacy, legitimate rights and interests of others.

Committed to innovating technology for the good, we at EZVIZ hereby earnestly advocate that every user shall use video products properly and responsibly, thus to collectively create a positive environment where all related practices and usage comply with applicable laws and regulations, respect individuals' interests and rights, and promote social morality.

Here are EZVIZ's initiatives that we'd appreciate your attention:

1. Each individual possesses a reasonable expectation of privacy, and the use of video products should not be in conflict with such reasonable expectation. Therefore, a warning notice which clarifies the monitoring range should be displayed in a reasonable and effective manner, when installing video products in public areas. For non-public areas, the rights and interests of people involved shall be evaluated thoughtfully, including but not limited to, installing video products only after obtaining the consent of the stakeholders, and not installing highly-invisible video products without other's knowledge.
2. Video products objectively records footage of real activities within specific time and space. Users shall reasonably identify the people and rights involved in this scope in advance, to avoid any infringement of portrait, privacy or other legal rights of others while protecting themselves through video products. Notably, if you choose to enable the audio recording function on your camera, it will capture sounds, including conversations, within the monitoring range. We highly recommend a comprehensive assessment on the potential sound sources in the monitoring range, so as to fully understand the necessity and the reasonableness before you turn on the audio recording function.
3. Video products in use will consistently generate audio or visual data from real scenes –possibly including biometric information such as facial images – based on the user's selection of product features. Such data can be used or processed to use. Video products are only technological tools that do not and cannot humanly practice legal and moral standards to guide lawful and proper use of data. It is the methods and purposes of the people who control and use the generated data that make a difference. Therefore, data controllers shall not only strictly abide by applicable laws and regulations, but also fully respect non-obligatory rules including international conventions, moral standards, cultural norms, public order and local customs. Furthermore, we should always prioritize the protection of privacy and portrait rights, and other reasonable interests.
4. The video data continuously generated by video products carries the rights, values and other demands of various stakeholders. Thus, it is extremely crucial to ensure data security and shield the products from malicious intrusions. Every user and data controller shall, undertake all reasonable and necessary measures to maximize product and data security, avoiding data leakage, improper disclosure or misuse, including but not limited to, setting up access control, selecting a suitable network environment where video products are connected, establishing and constantly optimizing network security.
5. Video products have made great contributions to enhance the safety of our society, and we believe that they will continue to play a positive role in various aspects of our daily life. Any attempt to abuse these products to violate human rights or engage in unlawful activities contradicts the very essence of the value in tech innovation and product development. We encourage every user to establish your own methods and rules to evaluate and monitor the use of video products, so as to ensure that these products are always used properly, thoughtfully and with goodwill.



1. Rechargeable Lithium ion Battery

- 1. The battery type of the device: Portable battery.
- 2. The battery of this device is non-removable, which is risky to remove.

Chemical Composition	Chemical Formula	CAS No.	Weight (%)
Lithium Cobalt Oxide	Co	12190-79-3	44.9%
Nanotubes	CNT	308068-56-6	0.40%
Polyvinylidene fluoride	PVDF	24937-79-9	0.58%
Aluminum Foil	AL	7429-90-5	4.21%
Copper Foil	Cu	7440-50-8	7.12%
Graphite	C	7782-42-5	24.62%
Super P	S-P	7782-42-5	0.27%
Styrene Butadiene rubber	SBR	61789-96-6	0.91%
Carboxymethylcellulose Sodium	CMC	9000/11/7	0.40%
Lead	Pb	7439-92-1	Not Detected
Cadmium	Cd	7440-43-9	Not Detected
Mercury	Hg	7439-97-36	Not Detected

2. INFORMATION FOR PRIVATE HOUSEHOLDS

- 1. Separate collection of waste equipment: Electrical and electronic equipment that has become waste is referred to as waste equipment. Owners of waste equipment must dispose of it separately from unsorted municipal waste. In particular, waste equipment does not belong in household waste, but in special collection and return systems.
- 2. Batteries and rechargeable batteries as well as lamps: Owners of waste equipment shall, as a rule, separate waste batteries and rechargeable batteries that are not enclosed in the waste equipment, which can be removed from the waste equipment without being destroyed, from the waste equipment before handing them in at a collection point. This does not apply if waste equipment is prepared for reuse with the participation of a public waste management authority.
- 3. Options for returning waste equipment: Owners of waste equipment from private households can return it free of charge to the collection points of the public waste management authorities or to the take-back points set up by manufacturers or distributors within the meaning of the Electrical and Electronics Equipment Law. Stores with a sales area of at least 400 m² for electrical and electronic equipment and those grocery stores with a total sales area of at least 800 m² that offer electrical and electronic equipment several times a year or on a permanent basis and make it available in the market are required to take it back. This also applies in the case of distribution using means of distance communication, if the storage and shipping areas for electrical and electronic equipment are at least 400 m² or the total storage and shipping areas are at least 800 m². Distributors shall, in principle, ensure take-back by providing suitable return facilities at a reasonable distance from the respective end user. The possibility of returning waste equipment free of charge exists for distributors who are obliged to take it back, among other things, if a new similar device that essentially fulfills the same functions is delivered to an end user.
- 4. Privacy Notice: Waste equipment often contains sensitive personal data. This applies in particular to devices of information and telecommunications technology such as computers and smartphones. In your own interest, please note that each end user is responsible for deleting the data on the waste equipment to be disposed of.
- 5. Meaning of the symbol “crossed-out wheelee bin”: The symbol of a crossed-out wheelee bin regularly depicted on electrical and electronic equipment indicates that the respective device is to be collected separately from unsorted municipal waste at the end of its service life.